

# I-49 South

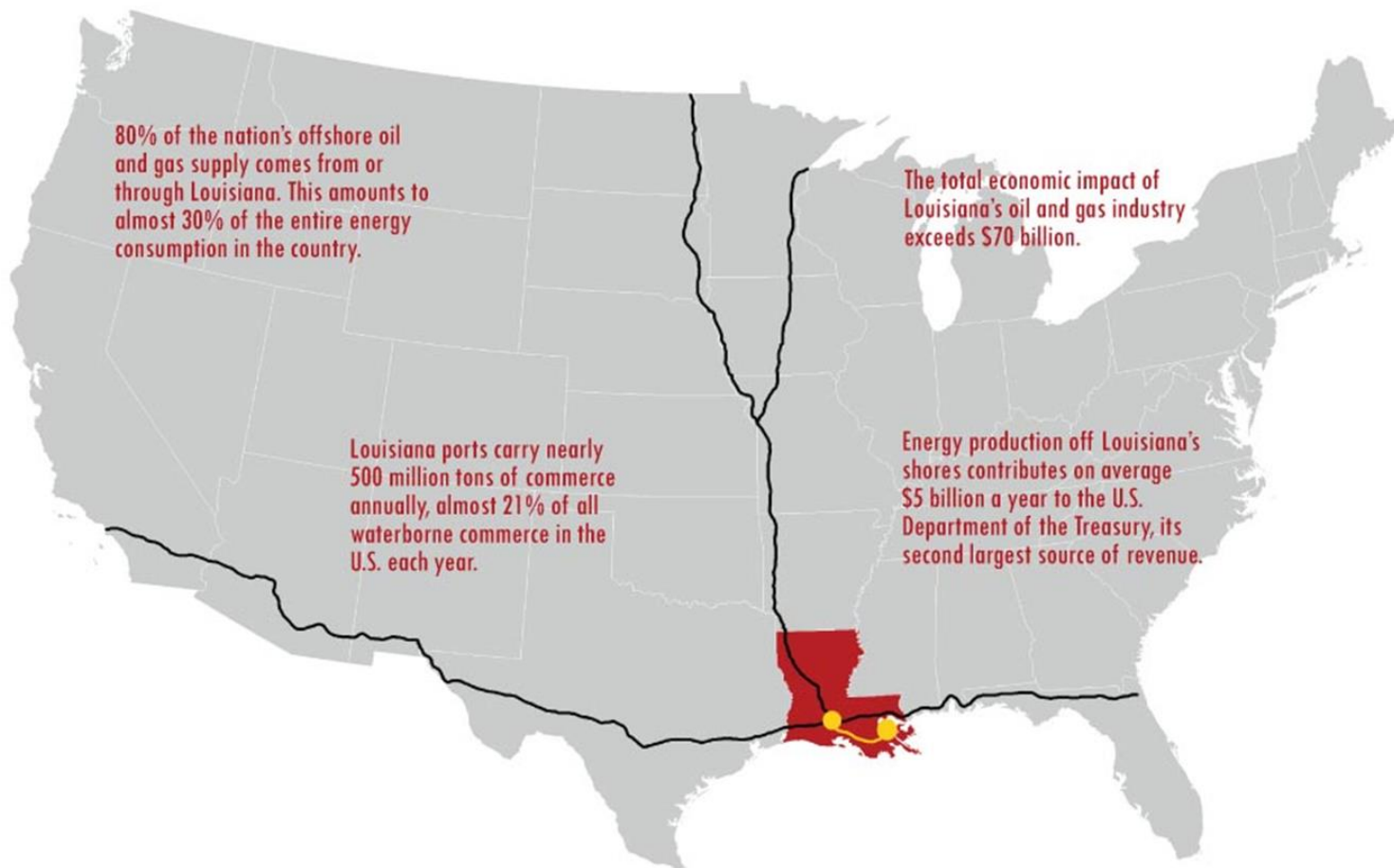
## America's Energy Corridor





# America's Energy Corridor

*U.S. Highway 90— from Interstate 10 in Lafayette to The Westbank Expressway in New Orleans— is designated as “America’s Energy Corridor.”*



80% of the nation's offshore oil and gas supply comes from or through Louisiana. This amounts to almost 30% of the entire energy consumption in the country.

The total economic impact of Louisiana's oil and gas industry exceeds \$70 billion.

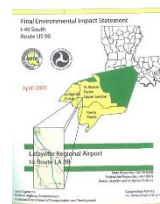
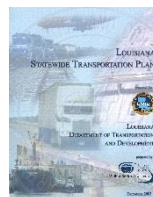
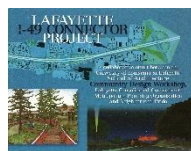
Louisiana ports carry nearly 500 million tons of commerce annually, almost 21% of all waterborne commerce in the U.S. each year.

Energy production off Louisiana's shores contributes on average \$5 billion a year to the U.S. Department of the Treasury, its second largest source of revenue.

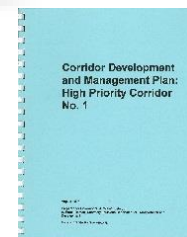


# A Historical Overview

- 1987** Congress authorized and funded a demonstration study of a limited access highway in Lafayette.
- 1990** DOTD began a comprehensive EIS study of U.S.90/U.S. 167 Evangeline Thruway corridor in Lafayette
- 1991** Congress enacted the ISTEA – National Highway System – I-49 Named as NHS
- 1992** A draft EIS was approved for public distribution & withdrawn due to public opposition
- 1993** Lafayette Chamber & Lafayette Areawide Planning Commission convened an Arterial Task Force – Its final report identified Evangeline Thruway corridor as the most feasible.
- 1995** The National Highway System Designation Act identified the corridor from Lafayette to New Orleans as High Priority Corridor 37
- 1997** Governor Mike Foster established I-49 South Project Task Force to document the need, sources of funding and support for the upgrade of US-90 to interstate standards.
- 1997** DOTD reinstituted a new EIS project for the Connector
- 1998** Governor's I-49 Task force submitted its report entitles *Feasibility Analysis to Upgrade US 90 to I-49*. The report outlined the need for the upgrade.
- 1998** Transportation Equity Act for the 21<sup>st</sup> Century identified the corridor as "Future I-49." The first sign was installed along the route. DOTD submitted HPC No. 1 Development Plan to Gov. Foster which identified possible projects along the route.
- 2002** The Final EIS for the Connector was released and a Record of Decision was issued. The ROD was challenged in a Federal Court and FHWA prevailed. The *Blue book* was published
- 2003** DOTD published *Louisiana Statewide Transportation Plan* and named I-49 in its list of Mega Projects with Funding Priority Scenarios of A & B.
- 2005** A ROD was issued for the segment from Lafayette Regional Airport to LA 88.
- 2006** A draft EIS and ROD was issued for Wax Lake Outlet to Berwick.
- 2007** A ROD was issued for the segment from Raceland to Ames Blvd.



Public Comments Open 11/15/09







# Significance of I-49

## International and National Level

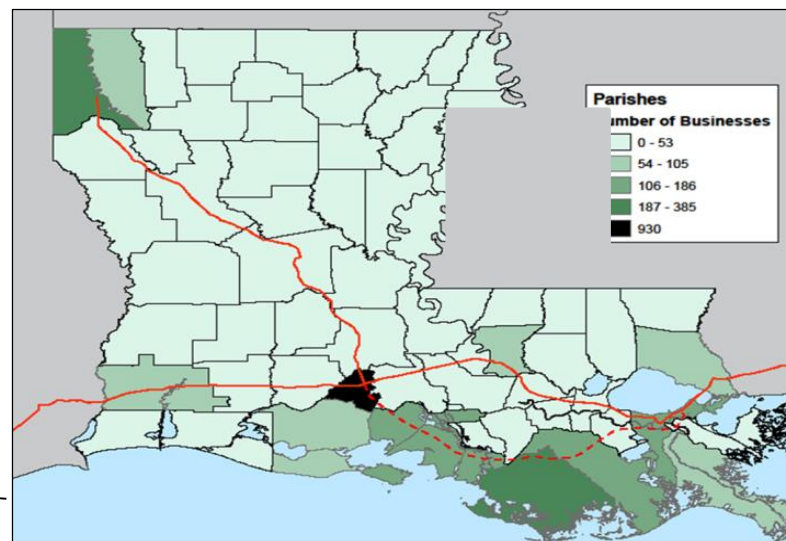




# Significance of I-49

## National Level

- Louisiana's offshore production is a major contributor of revenue to the U.S. treasury
- U.S. Highway 90 forms a key link in the energy supply chain: Connects the Gulf of Mexico to the industry's infrastructure along the U.S.
- Nearly 80% of the country's offshore oil and gas comes *through* this corridor





# America's Energy Corridor

## Facts about the Corridor

- 24% of Louisiana's population resides along the 140-mile corridor
- Passes through 10 LA Parishes
- Provides vital access to:
  - 4 of the 6 deep draft ports in the state
  - 9 airports
  - The busiest industrial corridor in Louisiana
  - A top 10 industrial corridor in the U.S. in terms of jobs per capita
  - More navigable water miles than any other region its size in the U.S.





# America's Energy Corridor

## Population Along the Corridor

### Parishes

Parish	Population (2011 Census)
Lafayette	227,390
St. Martin	52,917
Iberia	73,400
St. Mary	54,210
Assumption	23,153
Terrebonne	111,917
Lafourche	96,666
St. Charles	52,517
Jefferson + Orleans	801,890
<b>1,494,060</b>	

### Cities

City	Population (2011 Census)
New Orleans	360,740
Lafayette	122,130
Houma	33,745
New Iberia	30,683
Gretna	17,739
Thibodaux	14,615
Morgan City	12,303
Raceland	10,224 <sup>1</sup>
Franklin	7,600
<b>609,779</b>	

<sup>1</sup> 2000 Census







# America's Energy Corridor

## Assessment of Infrastructure & Resources



- **Ports**
  - 9 within the corridor
  - 7 in the impact area
- **Refineries**
  - 4 within the corridor
  - 4 in the impact area
- **Offshore Support Vessel Bases**
  - 895 within the corridor
  - 260 in the impact area
- **Shipyards**
  - 19 within the corridor
  - 6 in the impact area







# America's Energy Corridor

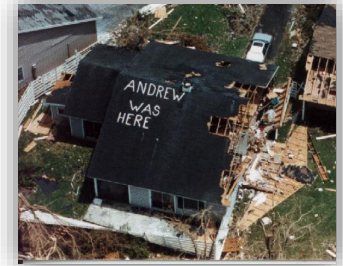
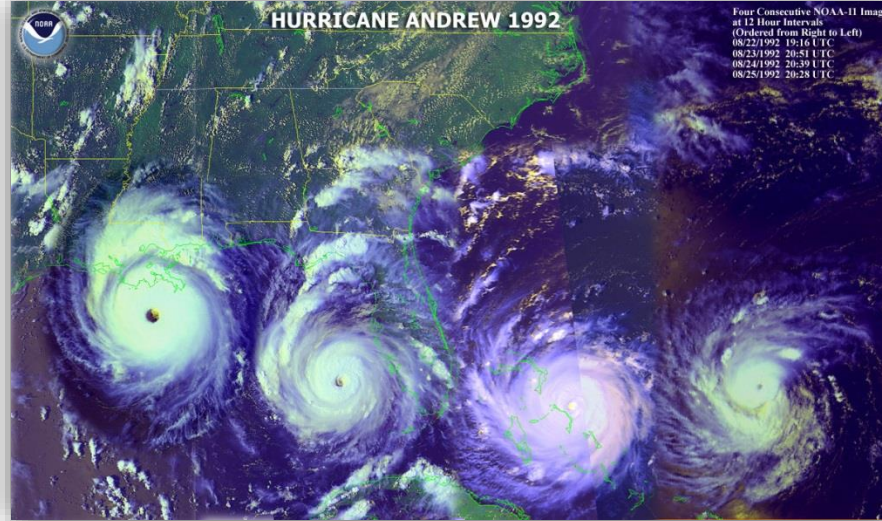
## Economic Impact



- The development, jobs and revenue created by the energy industry along the corridor have stimulated major growth in Louisiana's economy
- **More than 1,500 oil and gas companies operate within the corridor**
- Unemployment rates along the corridor are lower than the state average and much lower than the national rate
- **The total economic impact of Louisiana's oil and gas industry exceeds \$77 billion annually**
- The energy industry's reliance upon the corridor is undeniably the driver behind the argument to upgrade to interstate standards



## Hurricane Evacuation

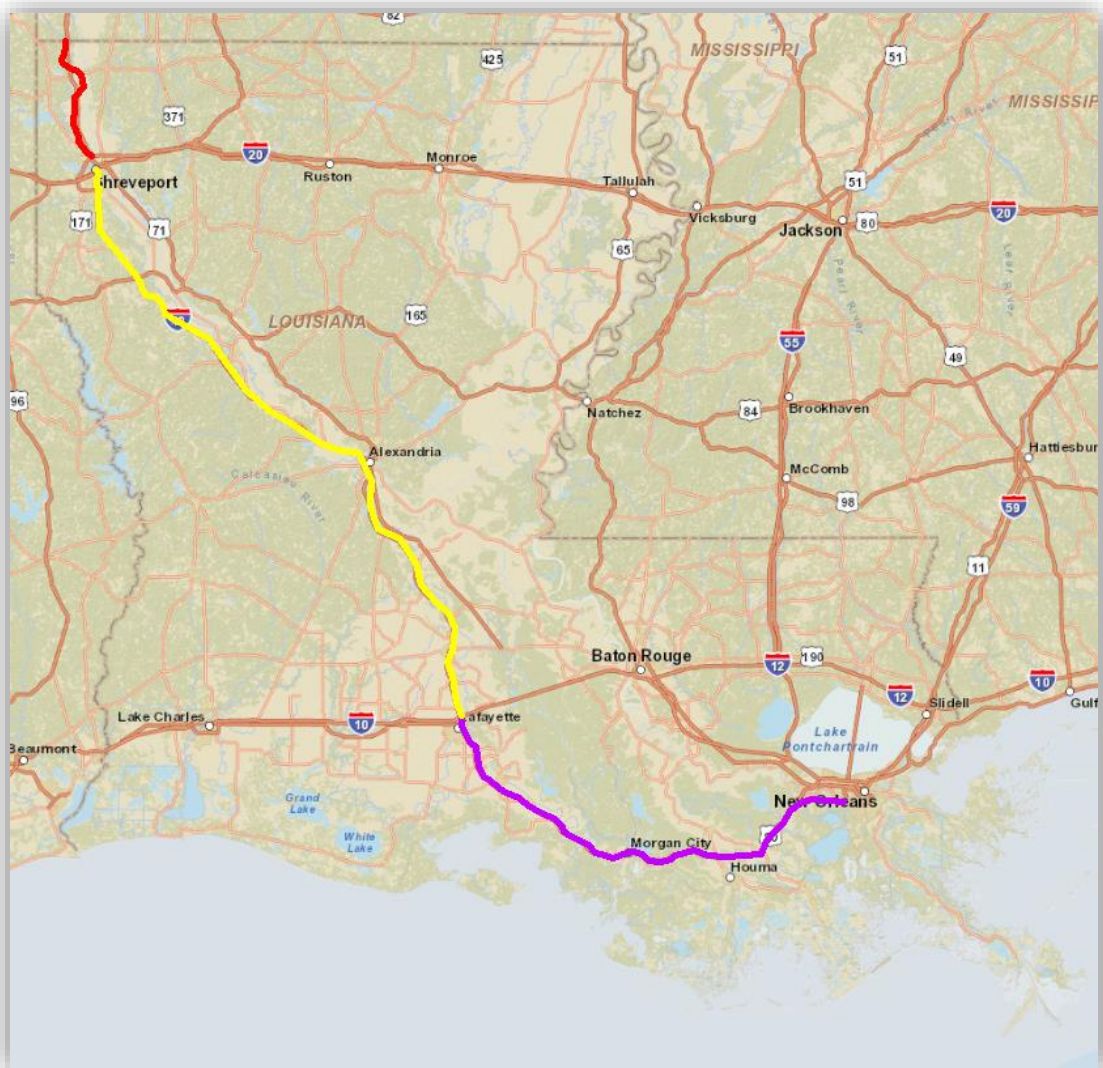


- The corridor is the only major evacuation route for over 1/2 million residents
- Some portions of U.S. Hwy 90 were built to handle 42,000 vehicles daily
- **Average traffic counts range up to 100,000 vehicles per day**
- **75,000 vehicles travelled the road within a 12-hour period during the Hurricane Andrew evacuation in 1992**



# I-49 In Louisiana

## 3 Segments



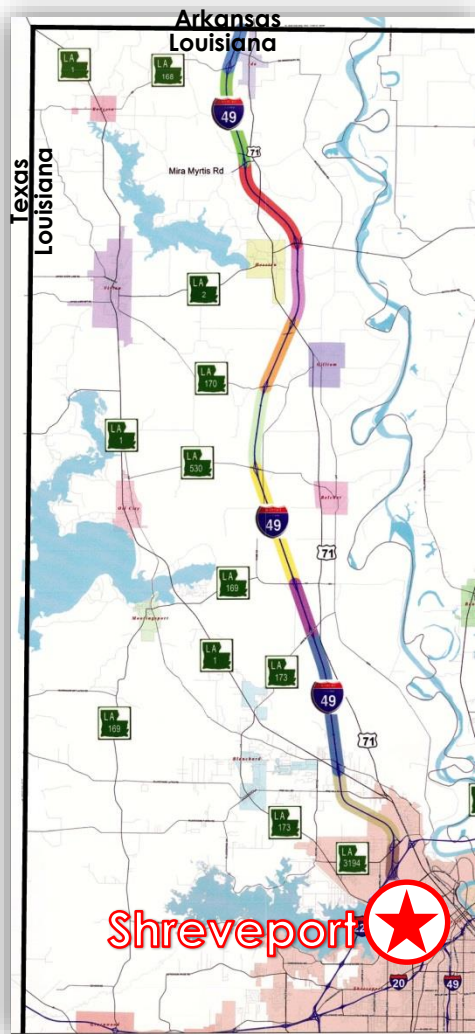
-  Arkansas Border to Shreveport
-  Shreveport to Lafayette
-  Lafayette to New Orleans





# I-49 In Louisiana

## Arkansas Border to Shreveport



- Approximately 40 miles
- Total Corridor cost: \$601,002,808
- Fully Funded
- Scheduled to be complete in 2018

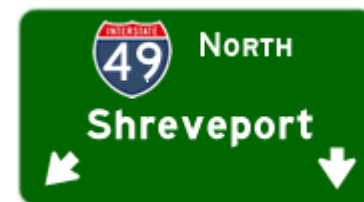
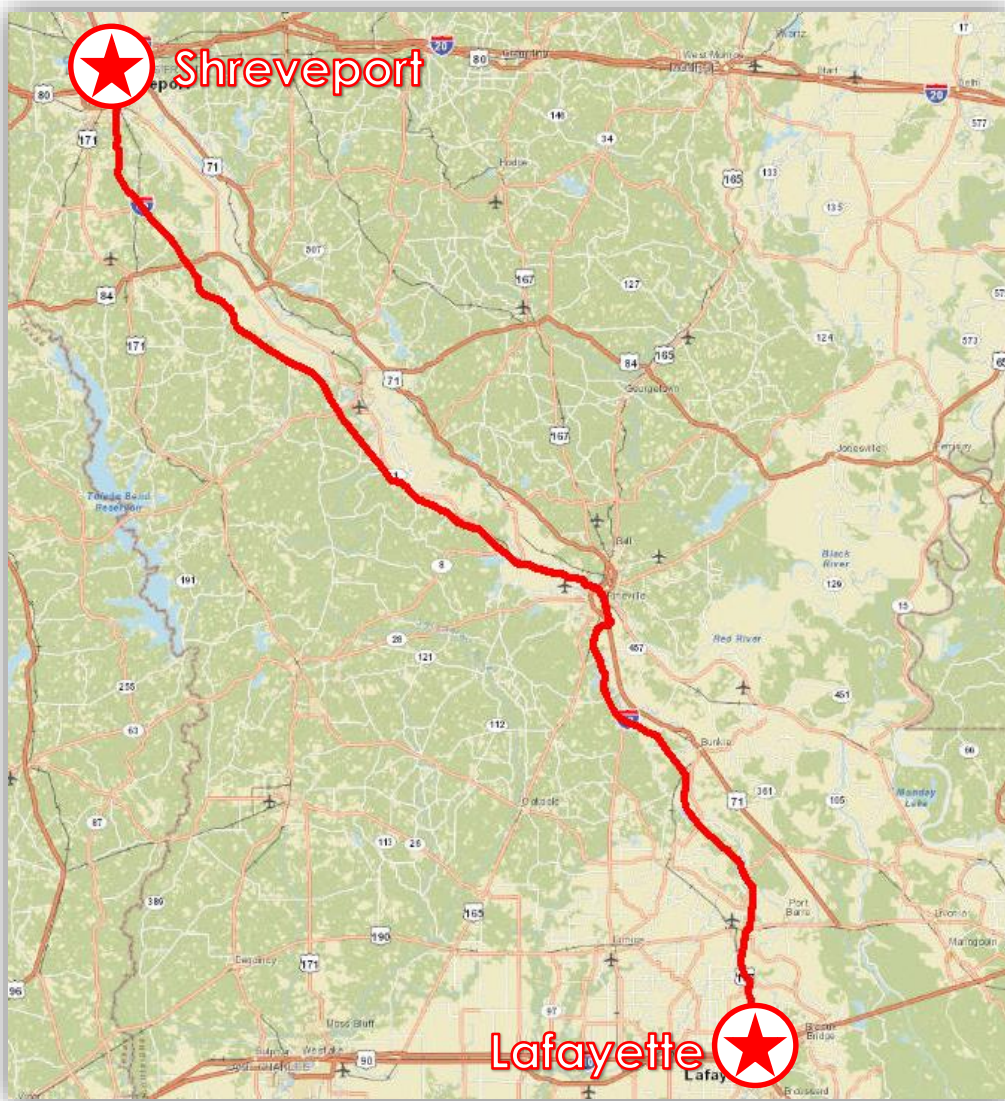
Completion Date	Segment	Segment Cost
November 2008	LA 168 to Arkansas State Line	\$33,364,000
March 2009	Mira Myrtis Road to LA 168	\$56,862,008
April 2008	LA 2 to Mira Myrtis Road	\$25,708,600
September 2009	US 71 to LA 2	\$55,798,000
September 2010	LA 170 to US 71	\$62,473,200
December 2010	LA 530 to LA 170	\$53,131,000
October 2010	LA 169 to LA 530	\$55,128,000
October 2009	LA 173 to LA 169	\$14,426,000
June 2010	LA 1 to LA 173	\$71,748,000
To Be Funded HB 370 FY 2011	MLK Blvd. to LA 1	\$68,444,000
To Be Funded HB 2 FY 2011	I-220 to MLK Blvd.	\$103,920,000





# I-49 In Louisiana

## Shreveport to Lafayette



# Complete!

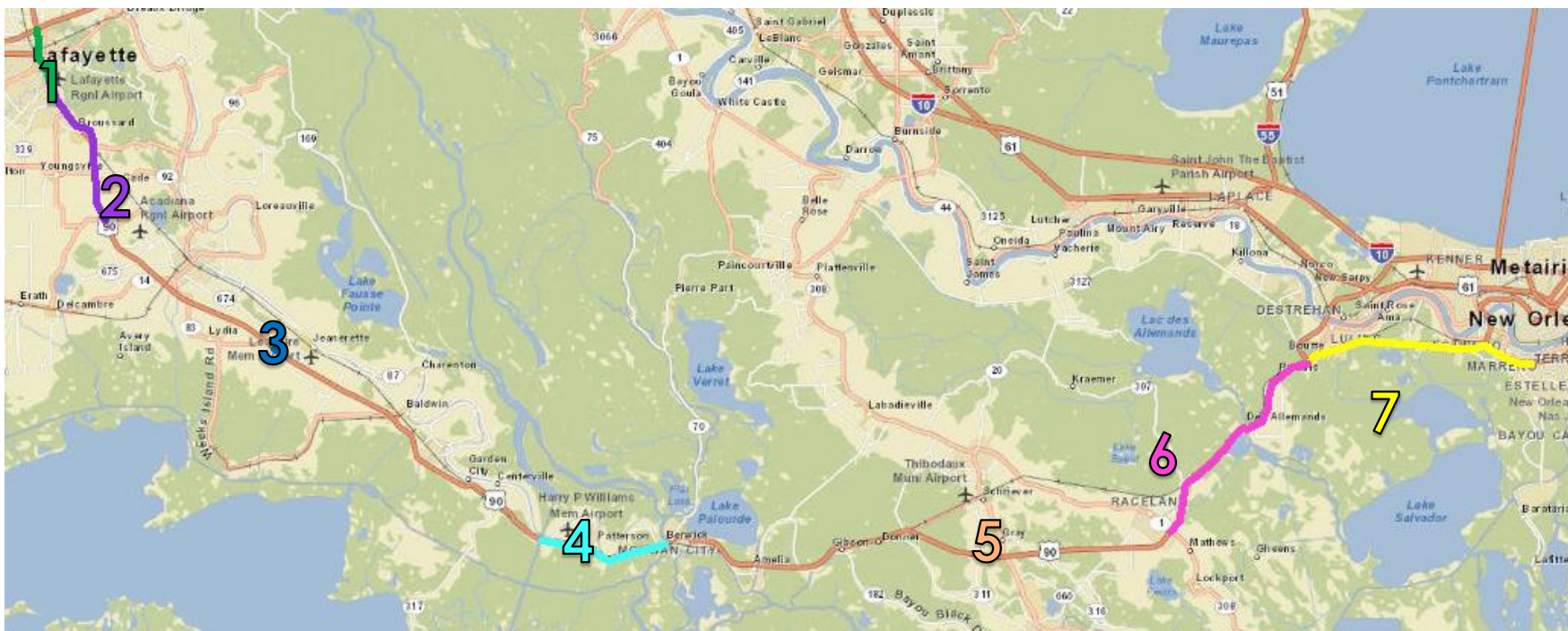
- Approximately 200 miles
- Completed in 1996



# I-49 Lafayette to New Orleans

# I-10 Lafayette to Superdome

140 Miles



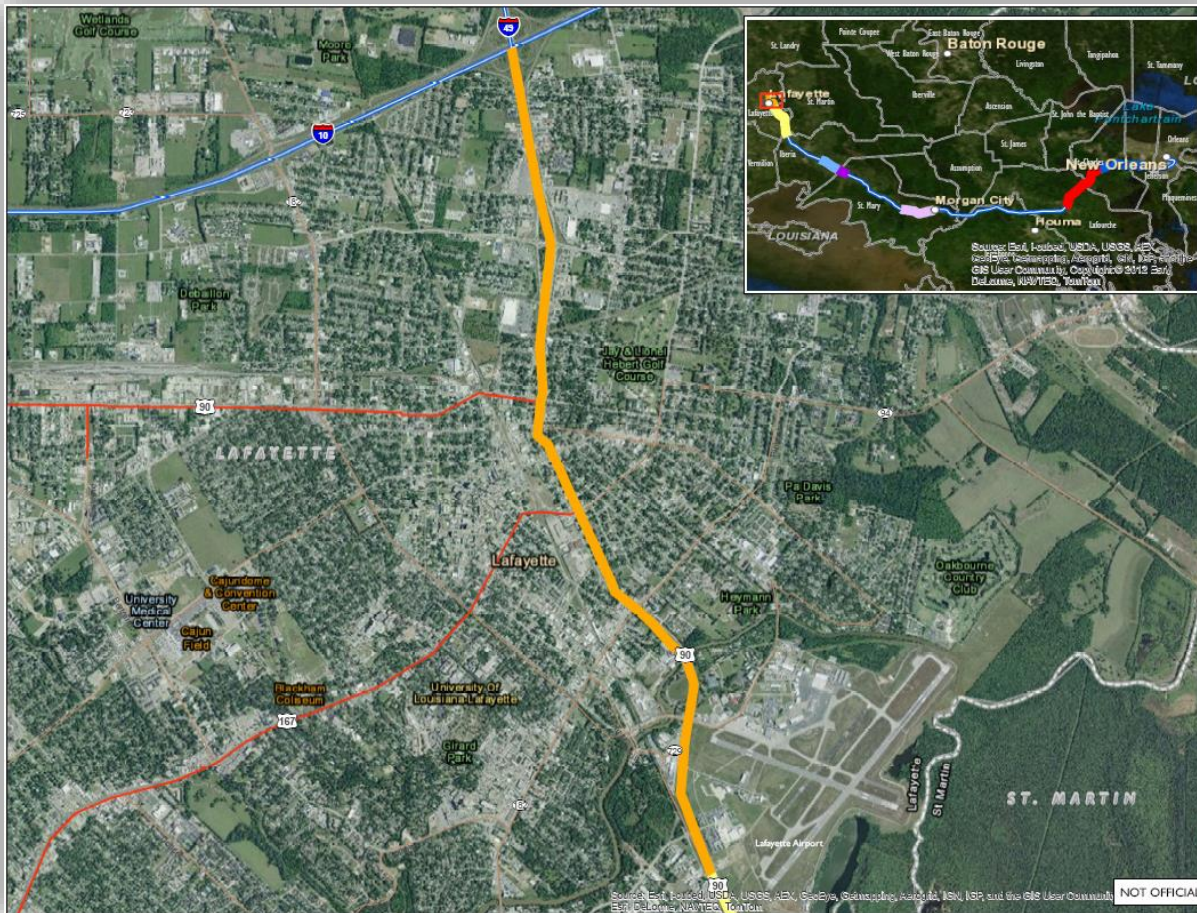
- 1** I-10 in Lafayette to Lafayette Regional Airport (The Connector) – Incomplete
- 2** Lafayette Regional Airport to LA 88 – Mostly Completed
- 3** A small segment in Patoutville (Iberia Parish) – Mostly completed
- 4** A segment within the city of Berwick in St. Mary Parish – Incomplete
- 5** Morgan city to Raceland - Completed
- 6** LA 308(Raceland) to I-310 in St. Charles Parish - Incomplete
- 7** I-310 to Ames Blvd – Incomplete





## DOTD Current Activities

### I-10 To Lafayette Regional Airport (The Connector)



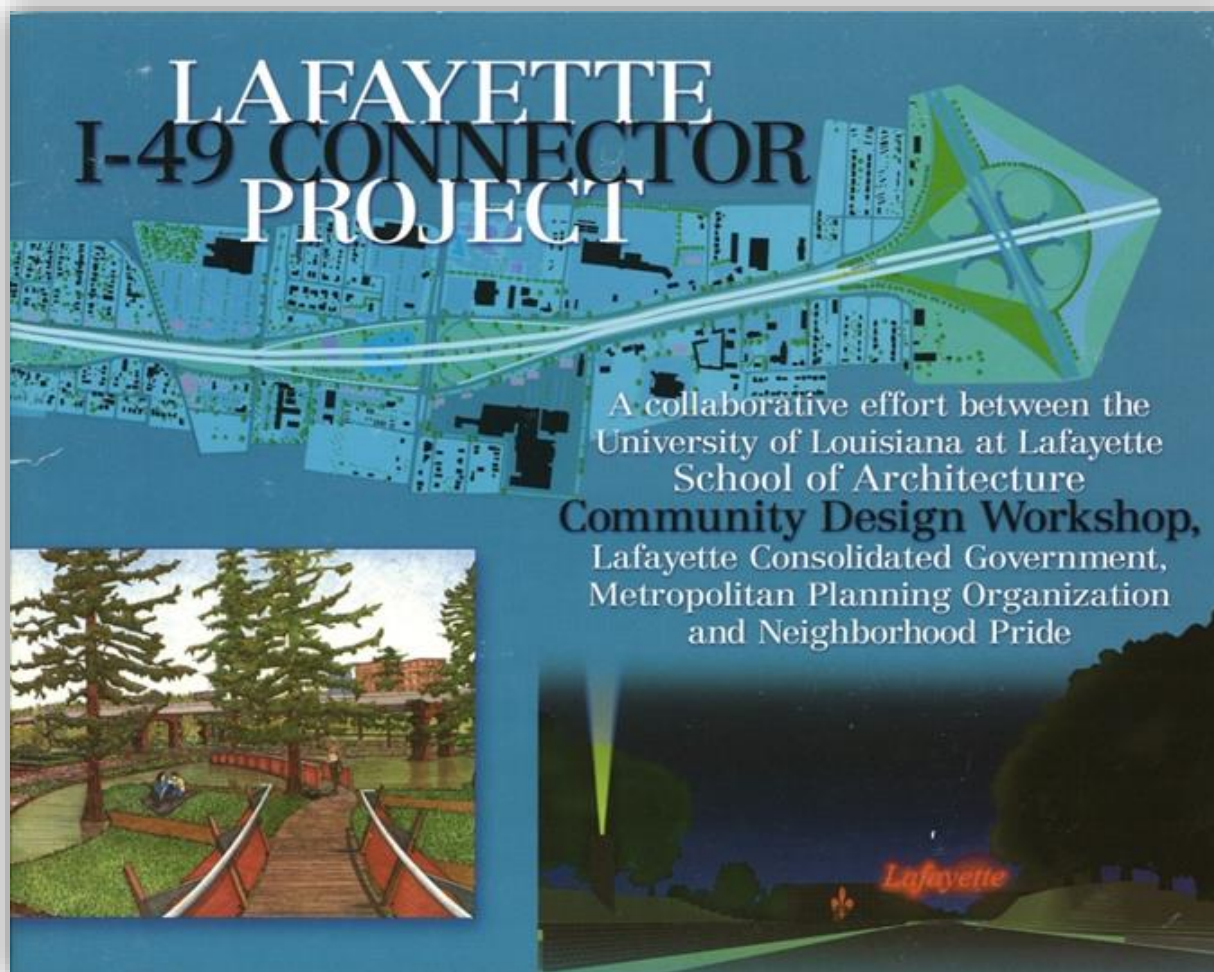
- 4.58 miles
- Complex structure
- Environmental Stewardship
- Historical & Physical significance
  - Church
  - Neighborhood
  - Cannery
  - National Park
  - Airport

NOT OFFICIAL



## The Connector

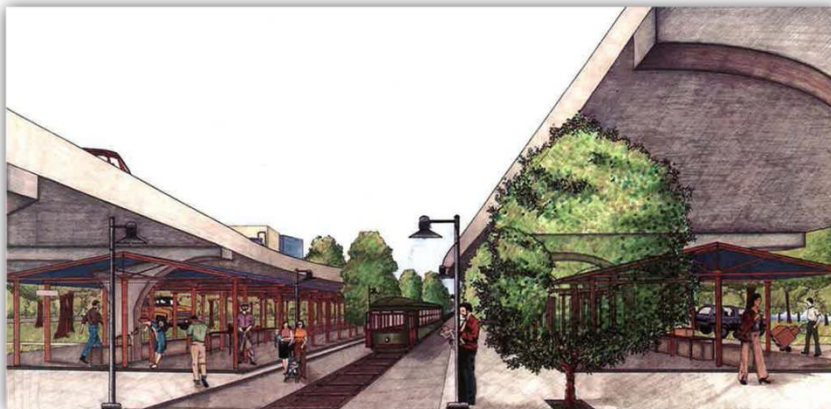
Environmental Stewardship Guiding Document







## The Connector Environmental Stewardship



A farmers' market integrated underneath the interstate facility. The light rail system connects downtown, neighborhoods, airport, and the university.



A public plaza at St. Genevieve Church becomes an important urban element in the linear green space design. The design integrates sound walls, fountains, and landscape into the plaza.

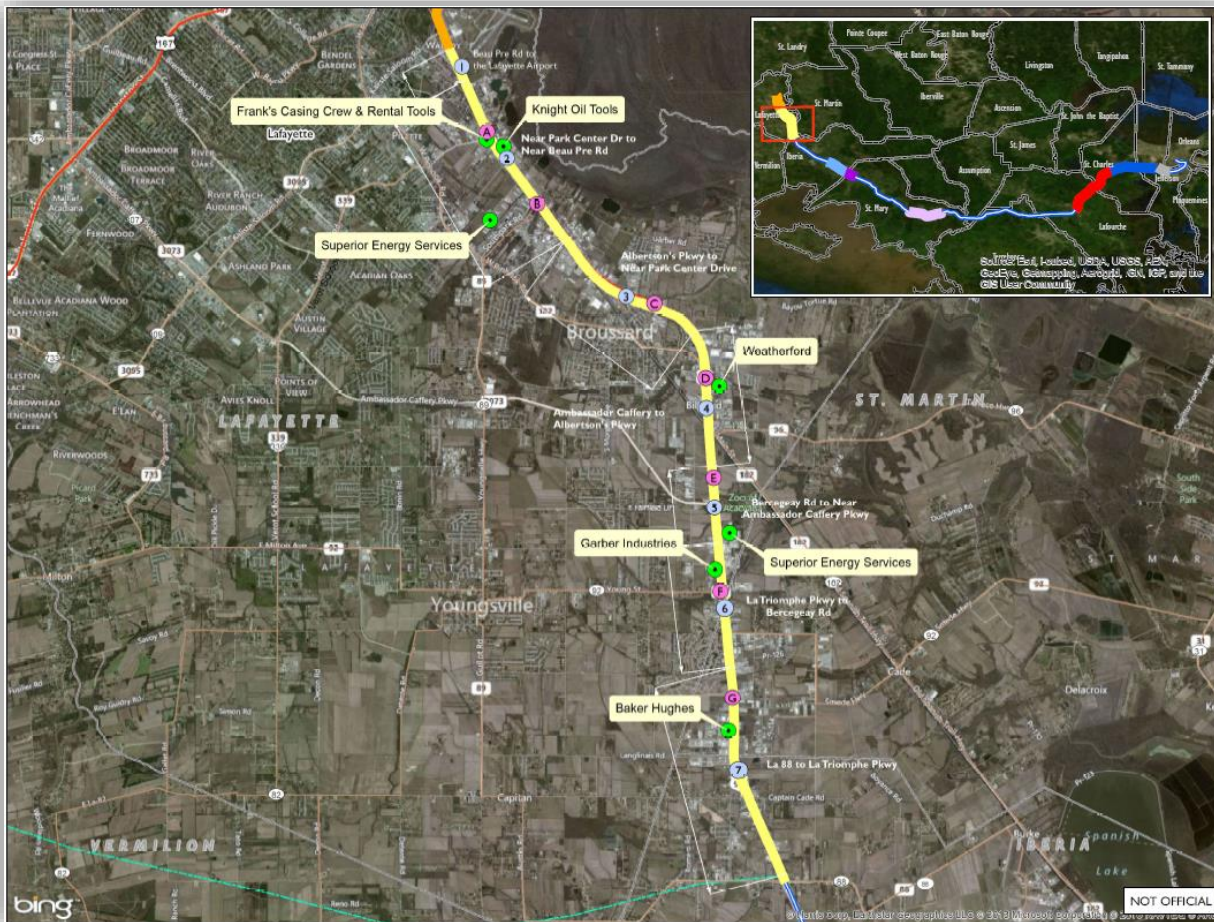


A park system with bike and walking trails share right-of-way with light rail transportation and the elevated highway.



## Lafayette Airport to LA 88

- 12 miles
- Divided into 7 Segments



- 1 Beau Pre Rd to the Lafayette Airport
- 2 Near Park Center Dr to Near Beau Pre Rd
- 3 Albertson's Pkwy to Near Park Center Drive
- 4 Ambassador Caffery to Albertson's Pkwy
- 5 Bercegeay Rd to Near Ambassador Caffery Pkwy
- 6 La Triomphe Pkwy to Bercegeay Rd
- 7 La 88 to La Triomphe Pkwy

NOT OFFICIAL





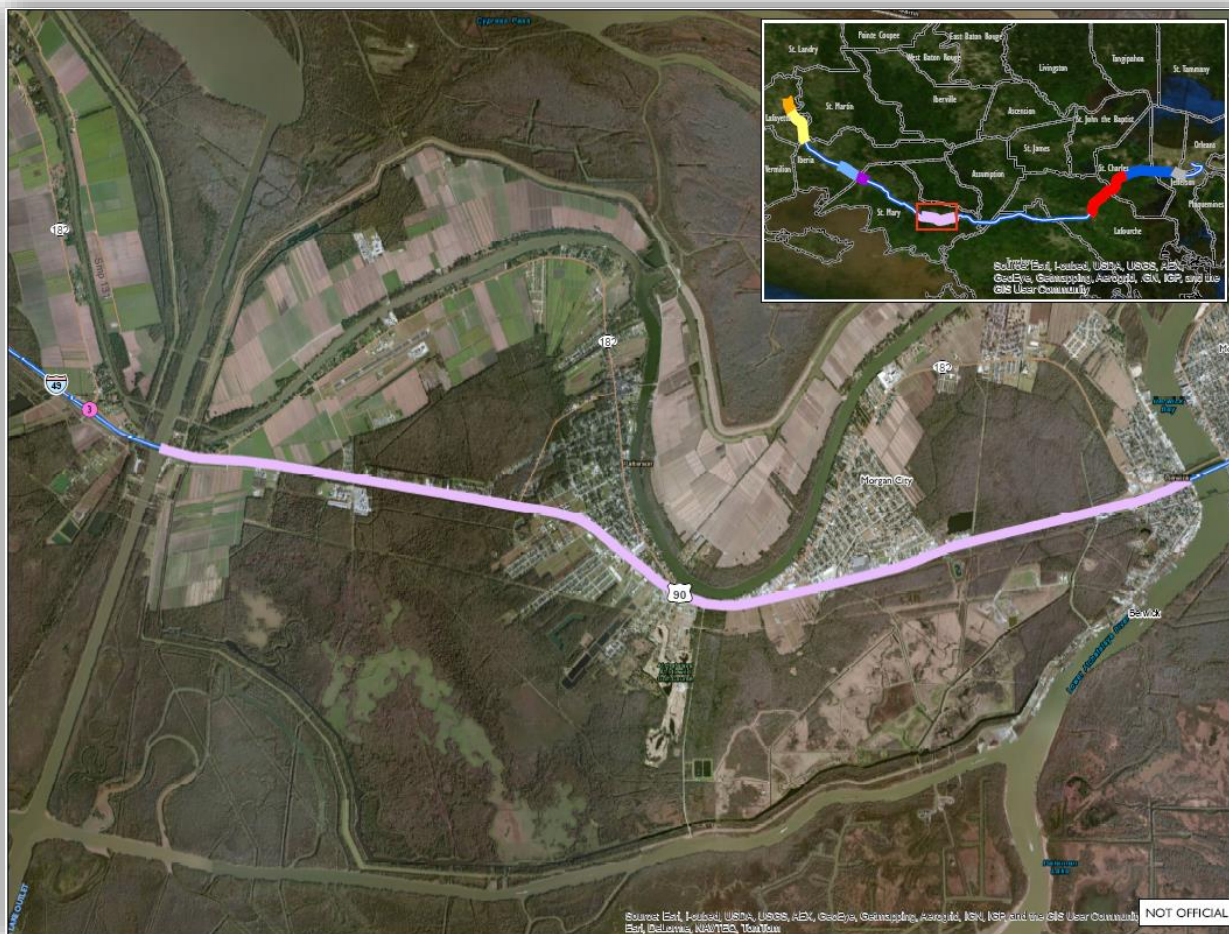
# I-49 Lafayette to New Orleans

## Completed Projects (Iberia & St. Mary Parishes)

Completion Date	Description	Location	Parish
January 2001	Interchange	Lewis Street	Iberia
September 2001	Overpass	LA 3211	St. Mary
January 2003	Overpass	Darnall Road	Iberia
July 2003	Overpass	LA 668	Iberia
March 2005	Overpass	LA 88	Iberia
April 2005	Frontage Road	LA 675 & LA 14	Iberia
May 2005	Overpass	LA 83	Iberia
2009	Interchange	LA 675	Iberia
2010	Frontage Road	LA 88 to LA 675	Iberia



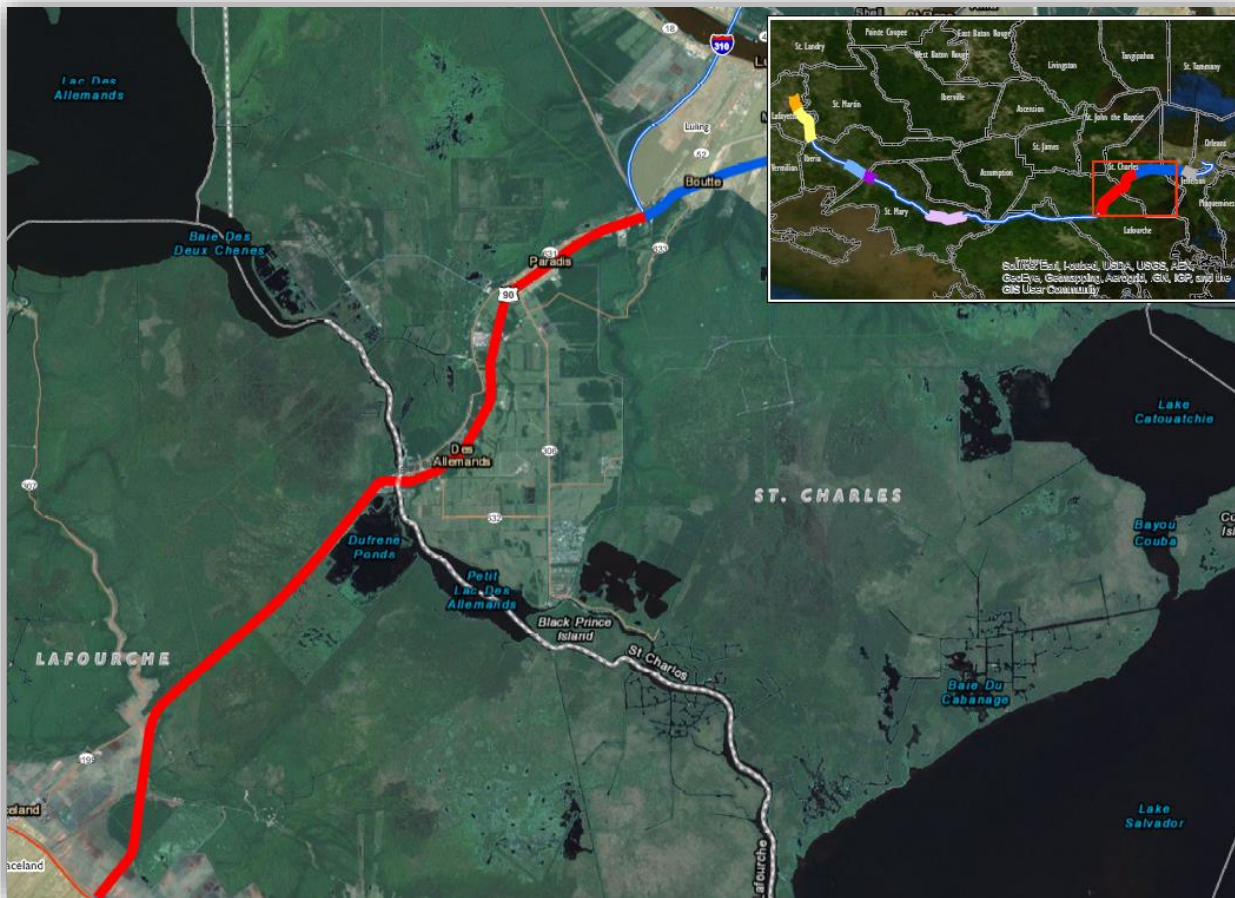
## Wax Lake to Berwick



- 9 miles
- DOTD plans for segmental upgrade



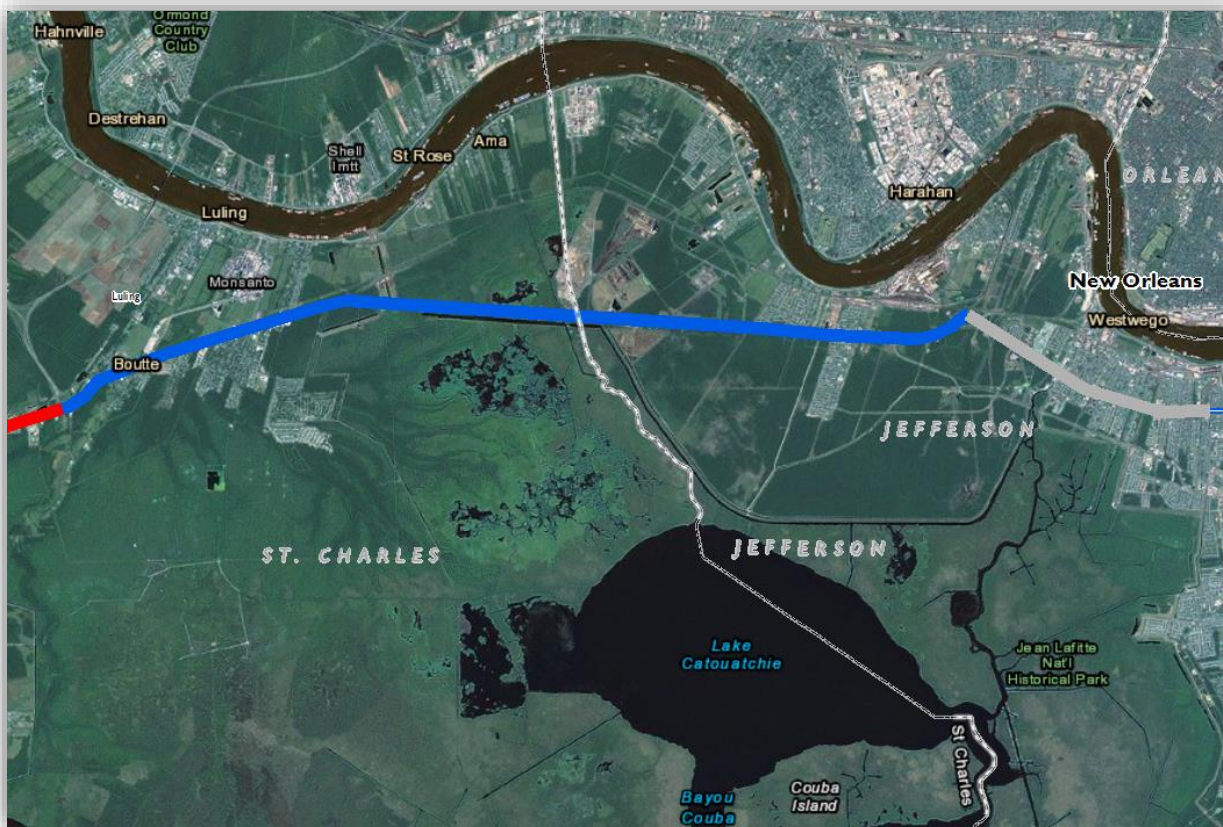
## LA 308 (Raceland) to I-310



- 18 miles
- DOTD Plan for improved safety and segmental upgrade
- DOTD Plans to upgrade I-310 interchange



## I-310 to Ames Blvd



- 21.5 miles
- Newly completed Huey P. Long Bridge
- Ames Blvd to Superdome is complete and is known as Westbank Expressway

I-310 TO LA 541 (Huey P. Long Bridge)

LA 541 (Huey P. Long Bridge)  
TO AMES BLVD